

# CS67PLUS



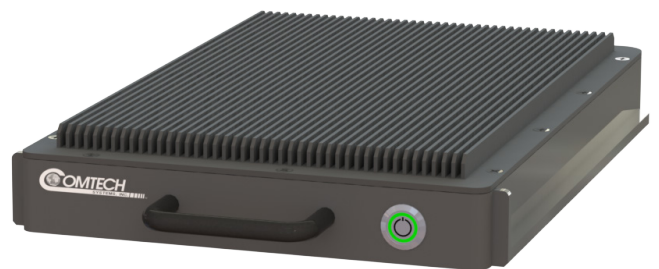
**World's first software-defined adaptive troposcatter combination radio/modem, packaged in a compact sealed module**

## CS67PLUS

Comtech Systems, the industry leading troposcatter technology company for the last 40 years, is proud to introduce the CS67PLUS Troposcatter Modem/Radio. The CS67PLUS is the first software-defined adaptive troposcatter modem and radio packaged in a compact sealed module. This adaptive architecture is capable of supporting Line-of-sight (LOS) and Troposcatter beyond line-of-sight (BLOS) communications with a capacity of up to 210 Mbps of full duplex data throughput. Offering a wide selection of modulation techniques from BPSK to 64APSK, coupled with the most powerful Error Correction in the industry, Low Density Parity Check (LDPC), the CS67PLUS Tropo Radio is a solid foundation for any troposcatter system.

### Key Features:

- Zero IF Direct digital to RF modulation
- Frequency agile from 4.4 to 5 GHz
- Highly integrated MIMO transceiver
- Higher order modulation
- Powerful FEC
- Seamless automatic ACM
- GigE layer 2 IP features and encryption
- Adaptive equalizer with diversity gain
- MIL-Spec rugged radio & modem
- 1 rack unit (RU) chassis (capable of 2 modules)



<b>Technical Specifications:</b>	
Radio Architecture	Non-redundant or redundant
Propagation Modes	LOS, BLOS, Troposcatter
Diversity Modes	Single, Dual, or Quad
Symbol Rate	2.5 MHz, 5 MHz, 10MHz, 20MHz (user selectable)
Forward Error Correction	Low Density Parity Check (LDPC)
Data Rate Modes of Operation	Fixed, ACM, Single Stream and Dual Stream
Modulation	BPSK to 64APSK
ACM/APC	Automatic/Hitless within a symbol rate
Data Rate	Up to 105 Mbps (single stream)
	Up to 210 Mbps (dual stream)
	Automatic or user selectable rates
Latency	Fixed < 5ms
	ACM < 30 ms
Channel Characteristics	Gaussian, Rayleigh with dispersion
Encryption	AES-256 - Optional Payload Encryption
Radio Interface	Ethernet (10 / 100 / 1000 BASE-T)
GUI	Web based graphical user interface
Built-In Test Equipment	Receive Signal Level Meter (70 dB dynamic range)
	Bit/Package Error Rate
	Loop-back, Digital, and RF
	Performance Logging (up to 64 GB)
Alarms	Major alarms, minor alarms, status
MTBF	100,000 Hours
<b>Dimensions:</b>	
Height	1.75 inches
Width	8.10 inches
Depth	12.70 inches
<b>Environmental:</b>	
Operating Temperature	-20°C (-4°F) to 60°C (140°F)
Storage Temperature	-50°C (-58°F) to 70°C (158°F)
Humidity	Up to 100% condensing
Altitude	Up to 10,000 meters
<b>Options:</b>	
Direct Sequence Spread Spectrum	2x, 4x, and 8x Channels up to 20 MHz

## About Comtech

Comtech Technologies Corp. (Nasdaq: CMTL) is a leading global provider of next-generation 911 emergency systems and secure wireless communication technologies to commercial and government customers around the world. Comtech designs produces and markets advanced and secure wireless solutions.



### Comtech Technologies

68 South Service Road  
 Melville, NY 11747 USA  
 +1.407.854.1950  
 csi-sales@comtechtel.com  
 www.Comtech.com